


# Outdoor DV-LED Installation Guide



V1.0

## Pre-Setup

---

 Please read entire instruction sheet before you start.

Please consult with a trained electrician at least one day before installation to discuss the power points for the outdoor DV-LED.


Please consult with your project manager for arrangements on mounting, where to house the external sending card box and media player.

Please ensure you have at least 2 people to do the installation.

 Tools: 1 x Screwdriver, 1 x Drill, 1 x Spirit Level

## Parts List

---

 As each outdoor DV-LED display will be unique, these figures are based per cabinet/module  
For each cabinet enclosure there should be;

1 x Power Supply Cable  
1 x Data Connection Cable  
6 x LED Modules

For the installation you will also need the following items. This will be based on your setup and how many cabinets you are planning to have.

- Unistrut (atleast 2)



- Unistrut Long Spring Channel Nuts alongside relevant bolt/screws



- LED Controller (4K where appropriate)
- External Device such as a Cloud Network Media Player

## Instructions

---

### Step 1

Cut the Unistrut rails to the sizes required.

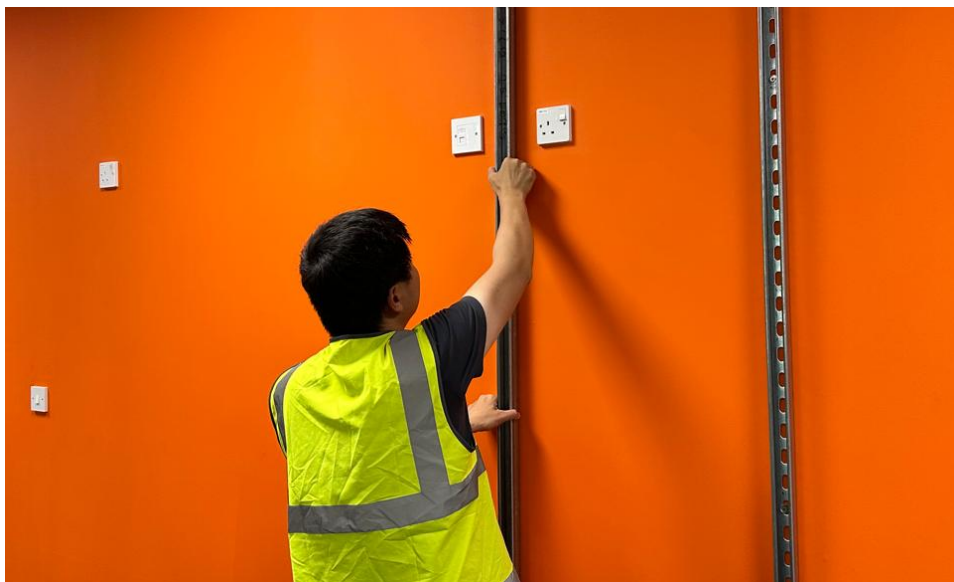
Each cabinet is 960mm x 960mm. Depending on how you want to mount the DV-LED please ensure you cut the Unistrut rails accordingly.



### Step 2

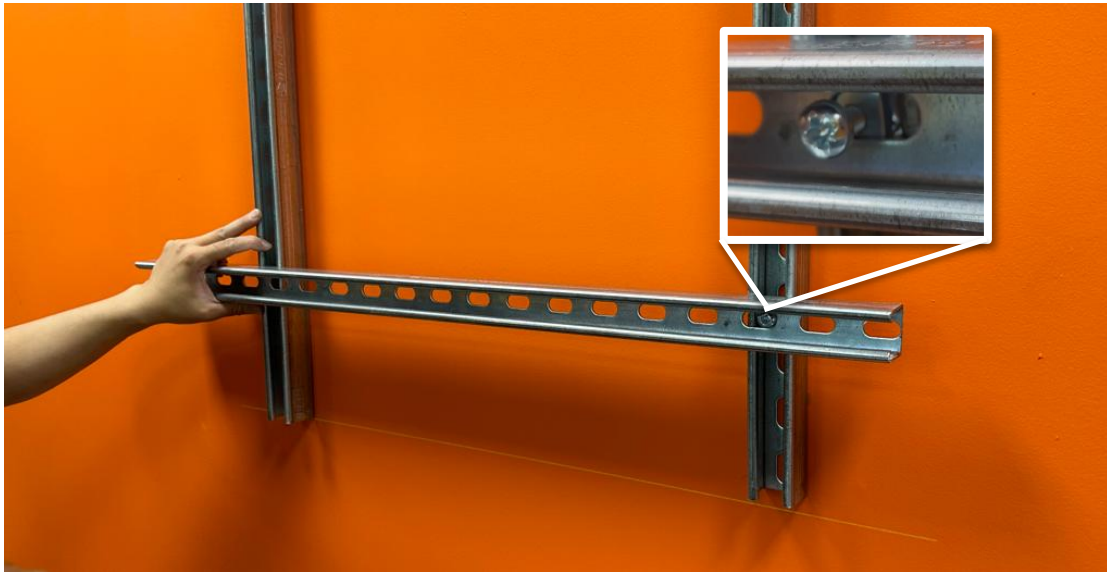
Ensure your area is tidy and then decide where to mount your Unistrut rails to the wall. Ensure you mount the Unistrut rails **Vertically first**.

This is where you would use the spirit level to ensure the rails are completely vertical.



### Step 3

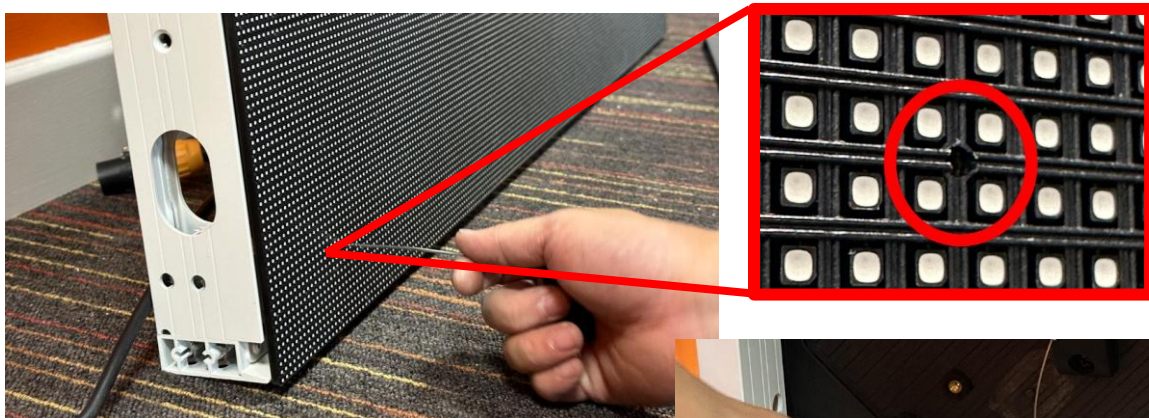
Install the horizontal Unistrut rails using the Unistrut Long Spring Channel Nuts, install them into the portrait channel and use your bolt or screw to screw them in shown below. *You may require washers in this process.*



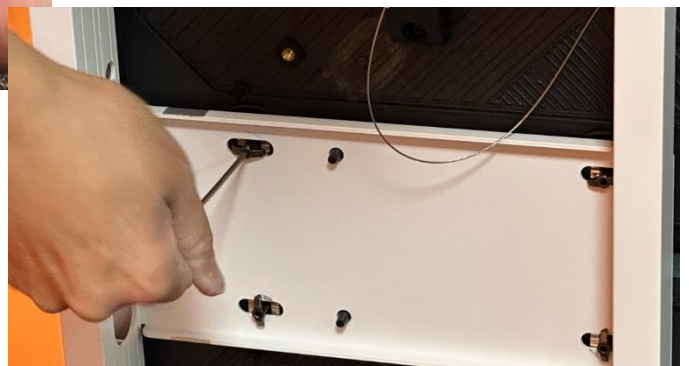
### Step 4

Here we will concentrate on the LED Cabinet. You will need to remove the 4 of the modules, One from each corner.

Using the supplied removal tool find the 6 small holes on each module then twist to unclip it from the cabinet.



You can also remove the modules from the back. Simply twist the 4 clips to detach the module from the cabinet.





Ensure you remove the carabiner clip connected on the back of each module.



### Step 5

Mount the DV-LED cabinet to the rails using the Unistrut Long Spring Channel Nuts. Ensure you tighten the bolts to secure the cabinet to the rails.



### Step 6

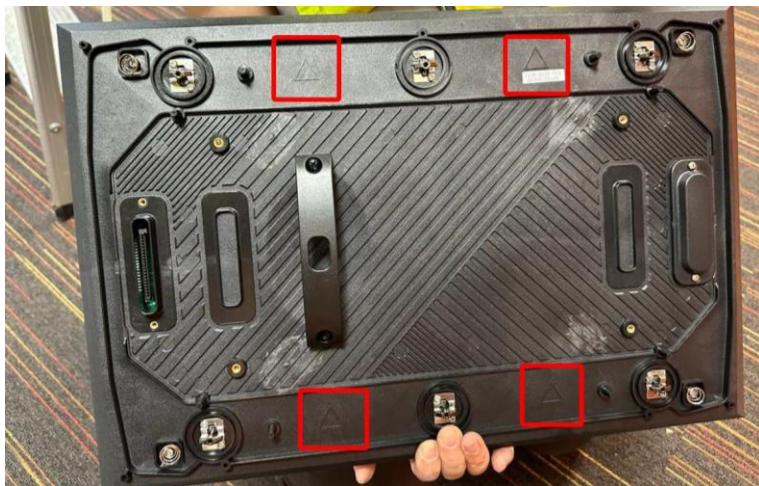
Once all secured connect all the power and data cables to all the cabinets.



### Step 7

Once all cables have been attached, you now need to re attach all the LED modules to the cabinet.

Make sure you reattach the carabiner to the back of the LED panel.



When attaching the LED Module to the cabinet make sure you attach it the correct way up. There are 4 markings on the back of each module with an arrow facing up to show which way it should be installed.

Please also take note of which side you are installing the module. Just remember the connector on the back will need to connect to the socket on the cabinet too.

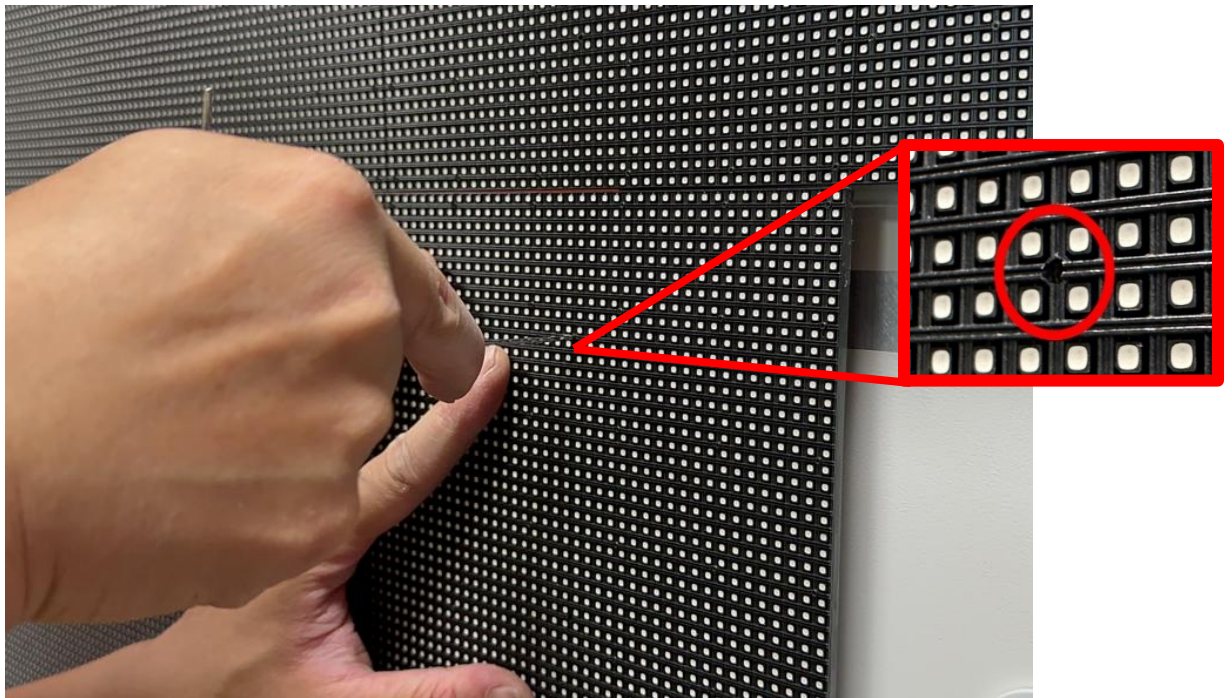


**Attempting to attach the module incorrectly can damage the connector.**



### Step 8

Once you have connected the module to the cabinet, please find the 6 small holes on each module then use the supplied removal tool to twist and secure the modules back to the cabinet.



### Step 9

All done! Just the case of connecting the outdoor DV-LED to your LED controller and then connecting an External Device such as a Cloud Network Media Player to it to display the content.

