

USER MANUAL

Version: ExxP1

Model: Economy Professional Monitor

Thank you for purchasing this product.

To receive more complete service, please contact support: LCDsupport@live.com

Warning! Important Safety Instructions



Please take a moment to carefully read and understand the following safety instructions before using your digital screen:

Ventilation:

The slots and openings on the back or bottom of the screen is designed to provide necessary ventilation. To ensure the reliable operation of the device and prevent overheating, it is crucial that these slots and openings are never blocked or covered.

Avoid placing the screen in confined spaces like bookcases or built-in cabinets, unless proper ventilation is available.

Keep the screen away from radiators and heat registers

Water and Moisture:

Do not place vessels (such as vases) containing water on the screen, as this can result in fire or electric shock.

Avoid exposing the screen to rain or placing it near water sources like bathtubs, washbowls, kitchen sinks, laundry tubs, wet basements, or swimming pools. In case of accidental exposure to water, immediately unplug the device and contact an authorized dealer.

Electrical Safety:

Avoid overloading wall outlets, extension cords, or adapters beyond their capacity, as this can lead to fire or electric shock.

Ensure that power-supply cords are positioned in a way that prevents them from being walked on or pinched. Pay attention to cords at the plug end, wall outlets, and where they exit the device.

During lightning storms or when leaving the screen unused for extended periods, unplug it from the wall outlet and disconnect the antenna or cable system to prevent damage from lightning or power line surges.

Never touch the inside of the screen, as it may result in electric shock. Only qualified technicians should open the device.

Always firmly plug in the power cord and pull the plug, not the cord itself, when disconnecting from the wall outlet. Avoid touching the power cord with wet hands.

If the screen does not operate normally, emits unusual sounds or smells, immediately unplug it and contact an authorized dealer or service center.

Installation Considerations:

For information on installing the screen in environments with heavy dust, extreme temperatures, high humidity, or chemical substances, please contact customer service. Failure to do so may cause serious damage to the screen.

Use only properly grounded plugs and wall outlets to ensure safety and prevent electric shock or equipment damage (Class I Equipment only).

When turning off the screen completely, disconnect it from the wall outlet. Ensure easy access to the wall outlet and power plug for quick unplugging if needed.

Avoid dropping or striking the product. In case of damage, disconnect the power cord and contact customer service.

Cleaning and Maintenance:

Before cleaning, unplug the power cord from the wall outlet. Use a soft, dry cloth to wipe the product. Do not use chemicals like wax, benzene, alcohol, thinners, insecticides, air fresheners, lubricants, or detergents, as they can damage the panel's appearance or erase printing on the product.

Prevent exposure of the screen to dripping or splashing liquids.

Keep the display away from heat sources and place it in a stable, well-ventilated location.

Handle the product with care, as it contains glass.

The holes or openings on the display are designed for ventilation. Do not cover or block them with any objects.

Remove any protective covering from the screen before using the display.

Power supply must be shut off before cleaning. Use a soft, lint-free cloth for screen wiping. If needed, you may use a glass cleaner, but avoid spraying it directly onto the display surface. Refer to Section 7.10 for more details.

Do not attempt to repair the product yourself, as improper disassembly may void the warranty and pose potential dangers.

If you encounter a problem that cannot be resolved using the provided troubleshooting guidelines, please contact your supplier.

Attention:

For displays intended for installation in windows, it is crucial to mount the panel surface a minimum of 100mm away from the inside of the window. However, we strongly recommend maintaining a distance of 200mm to ensure adequate air circulation between the display and the window. Failure to comply with these guidelines may result in failure, which will be considered user damage.

Performing the initial setup

This section of the guide is to allow swift set up and use of the unit. Please refer to the main part of the User Guide for full information on use of the unit.

Please follow the steps detailed below:

1. Unpack unit and place in desired location.
2. Take the power lead from the accessories bag then connect the power lead into the media player (and into a mains outlet. The unit will power on automatically.
3. Plug in HDMI cable from screen to external device.

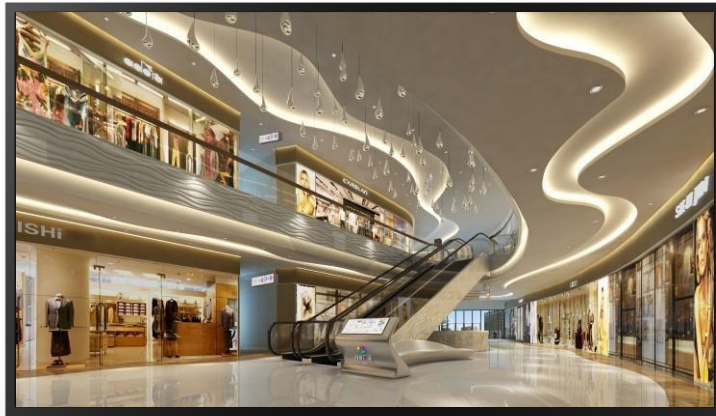


Table of Contents

1.	Introduction	5
1.1	Box Contents:	5
1.2	Remote Control	6
1.3	Replacing the Remote-Control Battery	7
2.	Operating the Screen.....	7
2.1	Start-up Mode	7
2.2	Standby Mode	7
2.3	Selecting a Source Input	7
2.4	Menu Operations	8
3.	Ports.....	11
4.	FAQ and Troubleshooting	12
5.	Other Information	13
5.1.1	How should I maintain and clean my screen?	13
5.1.2	Power Requirements.....	14
5.1.3	Decreasing power consumption	14
5.1.4	Disposal	14
5.1.5	Warnings	14

1. Introduction

We would like to extend our congratulations on your recent purchase of our product. Before using it for the first time, we kindly request you to read the manual thoroughly and follow all provided instructions.

To ensure the proper functioning and longevity of the product, please take note of the following guidelines:

Avoid exposing the product to liquids in the form of dripping or splashing. It is essential to keep the product away from any objects that contain liquids, such as vases.

Attention:

Please refrain from making unnecessary changes to the default settings.

During both installation and use, it is crucial to keep the product away from water sources.

1.1 Box Contents:

1 x Economy Professional Monitor

1 x Power Adapter


1 x Remote Control (with 2xAAA batteries)

1 x Warranty Card

1 x QR Code for User Manual

1 x Certificate of Quality.

1.2 Remote Control







Key	Description
	Switch between normal display & standby
	Eliminate the sound
Numeric keys	Input numbers
SMARTS	Sound mode switchover
SMARTP	Image mode switchover
INFO	Display signal type and resolution
	Set the time to switch off the monitor
	Exit or return to the previous menu
16:9	Select the display mode
Arrow keys	Up/down key: select an item Right/left key: adjust the value
VOL+/-	Adjust the volume
MENU	Display the menu
SOURCE	Display the source menu
+;-	Not available
COLOR	Select the color temperature
P/N	Not available
AUDIO	Not available
OK	Confirm the operation

Figure 3 Remote Control Overview

1.3 Replacing the Remote-Control Battery

1. Slide the battery cover off.
2. Remove the used batteries.
3. Insert the two new AAA batteries with their terminals corresponding to the indicators.
4. Put the cover back on.

2. Operating the Screen

2.1 Start-up Mode

Plug the power connector into the socket, then activate the monitor by pressing either the panel key or the remote-control button.

2.2 Standby Mode

Press the power-off button on the remote control to transition the monitor into standby mode.

Quick notes:

- If no signal is detected within 1 minute of start-up, the screen automatically enters standby mode.
- The screen also enters standby mode at the scheduled switch-off time.
- For complete power-off, ensure to remove the plug.

2.3 Selecting a Source Input

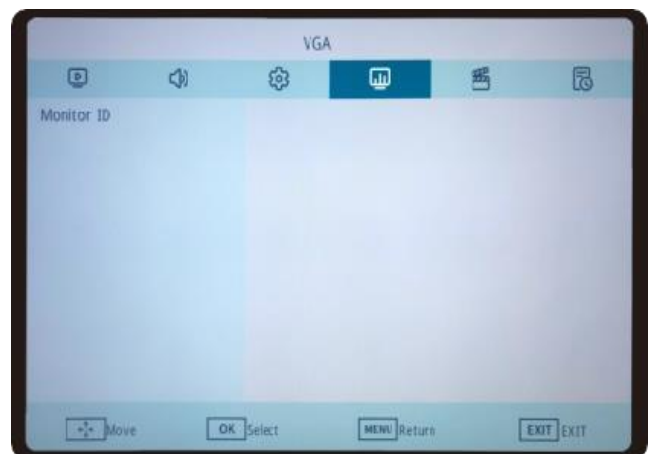
1. Activate the signal source menu by pressing the "SOURCE" key on the remote control or the **•** key on the panel.
2. Navigate through signal sources like HDMI1, HDMI2, VGA, and USB by using the arrow keys on the remote control or the **◀/▶** keys on the panel.
3. Confirm your selection by pressing the OK key on the remote control or the **▼** key on the panel.



2.4 Menu Operations

Press the MENU key on the remote control to access the main menu, where you can:

1. Navigate through menu options like image, sound, and settings by using the Left/Right arrow keys on the remote control or the ◀/▶ keys on the panel.
2. Select an item for adjustment by using the Up/Down arrow keys on the remote control or the ▲/▼ keys on the panel.
3. Confirm your selection by pressing the OK key on the remote control or the • key on the panel.
4. Adjust the selected item by using the Left/Right arrow keys on the remote control or the ◀/▶ keys on the panel to change its value.
5. Exit the main menu by pressing the MENU key when the main menu is displayed on the screen; return to the previous menu by pressing the MENU key when a submenu is displayed.
6. Note: During menu operations, inaccessible options are displayed in grey.



Category	Setting	Options
Picture	Picture Mode	Standard, Soft, Eye care mode, Bright, Custom
	Advanced Video	Aspect Ratio, Overscan, Dimming Setting, Color Temperature, Noise Reduction, Adaptive Contrast, Gamma, HDR Mode, Backlight Adjustment, Reset Video Settings (Yes/No)
Sound	Sound Mode	Standard, Rock, Pop, Jazz, Classical, Custom
	Balance	Adjust the right/left sound tracks
	Surround	On/Off
	Internal Speakers	Auto/On/Off
	Digital Output	RAW, PCM
	Audio Delay	Adjust the audio delay
	Reset Audio Settings	Yes/No
	Settings	OSD Settings
Power save settings		Power save, Quick Start, Auto Power Down
Auto Input Change		None/First/Custom
HDMI Settings		CEC, EDID, Video Range, HPD Delay
VGA Options		Option selectable at VGA source
Other Settings	Input Labels, Key Lock Settings, IR Lock Settings, LED Indicator, Mute Settings, Warmth, Signal Information	
	Monitor Information	Show the information of current source
	Factory Reset	Yes/No
Control	Control Interface	RS232C, OPS-RS232
	Monitor ID	Select monitor ID
Media	Unplug USB Device	Execute (Option selectable only when USB storage mounted)
Schedule	Sleep Timer	Off, 10 minutes, 15 minutes, 30 minutes, 60 minutes, 90 minutes, 120 minutes, 180 minutes, 240 minutes

3. Ports



Signal port	Port Name
1	RS232-IN port
2	HDMI1 port
3	HDMI2 port
4	VGA input port
5	PC-AUDIO port
6	SPDIF
7	USB 2.0

4. FAQ and Troubleshooting

Troubleshoot common issues by implementing the solutions provided below. If the problem persists, please reach out to us for further assistance.

Problems	Possible Causes	Solutions
The Power indicator does not come on	A. The monitor is not powered on	A. Check if the power cord is connected and switch ON the monitor
The Power indicator is on, but no image is displayed	A. The Video wire is detached or connected improperly B. No Video Signal Input	A. Connect or replace the video wire, and ensure proper and correct connection B. Check the signal source and ensure proper connection at the output end.
Image jerking or ripple	A. There exists an electric device that interferes with the video signals	A. Turn off the electric device or relocate the monitor
Dim or extremely bright screen	A. Low or high brightness/contrast	A. Check the brightness/contrast settings or restore to default settings
Colour difference	A. Improper chromatic saturation B. Improper RGB Values or colour temperature. C. Restore to default settings.	A. Check the chromatic saturation. B. Adjust the RGB values or reset the colour temperature.
Image distortion	A. Improper aspect ratio	A. Reset the aspect ratio.
No sound	A. The Audio wire is detached or connected improperly. B. The volume is muted.	A. Ensure proper connection at the input end. B. Reset the volume

5. Other Information

5.1.1 How should I maintain and clean my screen?

When you begin to observe the presence of dust, fingerprints, or smears on your screen, it is advisable to perform a cleaning.

- 1) Unplug or turn off your screen before you begin. Turning your *screen* off is safer, and you can see more dirt and smudges when the screen is unplugged. Plus, this gives your *screen* a chance to cool down, which will help you clean it better.



- 2) Clean the body or panel of your screen with a microfibre cloth dampened with a small amount of screen cleaning product. Please do so in a circular motion to clean off any dust or debris.
- 3) Once the screen is clean, remove any moisture using a dry cloth.



Please note: Do not spray water or any other liquid directly onto the screen. Any liquid entering the screen may cause a failure, fire, or electric shock; Never use paper towels, tissues, or rags to clean your screen. These contain fibres that can leave scratches on your screen. Also, remember to avoid pressing down too hard. Pushing on the screen too hard and cause pixels to burn out.

5.1.2 Power Requirements

1. Utilizes AC power input ranging from 100 to 240 volts with a frequency of 50/60 Hz.
2. Disconnect the power supply if the device is to remain idle for an extended period.

5.1.3 Decreasing power consumption

When you turn off the screen, it enters Standby mode, which still consumes a small amount of power. To minimize power consumption, it is recommended to unplug the power cord when the screen will not be used for an extended period.

5.1.4 Disposal

Correct Disposal of This Product (Waste Electrical & Electronic Equipment) (Applicable in countries with separate collection systems) This marking on the product, accessories or literature indicates that the product and its electronic accessories should not be disposed of with other household waste at the end of their working life. To prevent possible harm to the environment or human health from uncontrolled waste disposal, please separate these items from other types of waste and recycle them responsibly to promote the sustainable reuse of material resources. Household users should contact either the retailer where they purchased this product, or their local government office, for details of where and how they can take these items for environmentally safe recycling. Business users should contact their supplier and check the terms and conditions of the purchase contract. This product and its electronic accessories should not be mixed with other commercial wastes for disposal



5.1.5 Warnings

Image retention, commonly known as screen burn-in, can occur on most types of LCD panels if the same image is displayed continuously. The most common causes of image retention are logos that remain stationary on the LCD panel. To reduce this risk, avoid displaying still images for long durations and lower the brightness settings to decrease the intensity of the picture. Extended viewing of art in aspect ratios that are different from the aspect ratio of the panel may cause image retention. Always try to avoid black borders at the top or bottom by using correct image/video resolution. This will help eliminate the black borders and fit the picture to the entire area of the screen.