



10" POS Professional Monitor

Overview

Commercial Grade

Designed for use in commercial applications this screen can run 24/7. No external buttons or controls to avoid tampering.

Attach External Devices

The screen has a HDMI input for attaching external devices to run the screen.

LED Backlight

Improves brightness and contrast as well as improving their lifespan and reducing their power consumption. Unlike other forms of light this technology is mercury free; making it even more eco-friendly. The panel and backlight have a lifespan in excess of 70,000 hours.



RS-232 Control

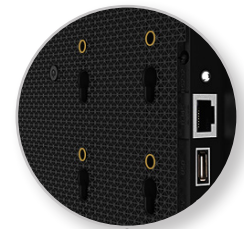
Control, scale and customise your display over long and short distances using RS-232,

Portrait/Landscape Orientation

The screen can be used in either a landscape or portrait orientation depending on your requirement.

Integrated Mounting Solution

The rear of the display includes an integrated and secure screw based mounting solution.





Commercial Monitor

Built with commercial grade panel and components these displays are designed to run 24/7 in constant use, unlike domestic screens. They have a tempered glass frontage and an enclosure made from a light-weight polymer so they are ideal for shelf edge and POS displays. They also have a screwless design to achieve a seamless aesthetic and avoid tampering. The panel also has a lifespan of over 70,000 hours of continuous use. They can either be used in landscape or portrait orientation.



HDMI Input

The monitor has a HDMI input so attaching external devices is easy thanks to its unmatched quality and ease of use. HDMI offers the best high definition audio and video quality on the market. HDMI is able to work with a huge variety of different products such as DVD players, media players, cameras and PCs.

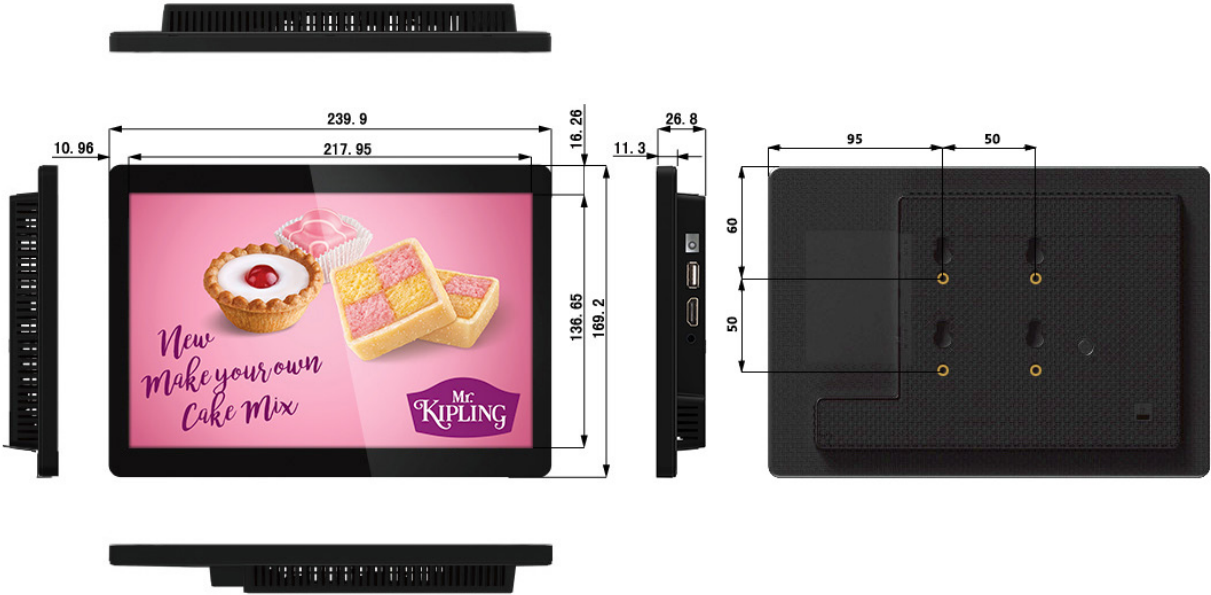


RS-232 Control

Once your screen is connected via RS-232 you can control, scale and customise your display remotely over short and long distances.



Technical Drawing:



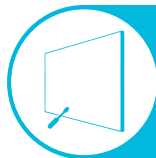
Panel	Display Size	10 inch
	Resolution	1280x800
	Display Area (mm)	217.95x136.65
	Aspect Ratio	16:10
	Brightness (cd/m2)	350
	Colour	16.7M
	Colour Depth	10 Bit
	Viewing Angle	178°
	Contrast Ratio	800:1
	Lifespan	50,000 Hours
Audio	Speaker Output	1.5W, 8Ω
Mechanical	Input Voltage	AC110~240V (50Hz~60Hz)
	Unit Size (WxHxD mm)	239.9x169.2x26.8
	Bezel Size (mm)	Top/Bottom:16.26 Left/Right:10.96
Environmental	Operating Temperature	0°C to 50°C
	Storage Temperature	-30°C to 60°C
	Operating Humidity	10% to 80%
	Storage Humidity	5% to 95%

Why Choose Our Commercial Display Solutions?



Lifetime Technical Support

From the moment you receive your product, throughout the duration of your warranty and even after your warranty has expired we are here to support you. If you require any assistance setting up or using your product, or have any problems at all, we can provide free technical support via telephone and email.



On-site Support and Maintenance*

If needed, we can provide an installation service for any of our products. We can also set up service-level agreements for larger projects that require maintenance contracts.



Extended Warranty*

All of our commercial display products come with a 3 year commercial warranty as standard but if you want to extend this you can upgrade this to cover a 5 year period at point of purchase.



Training

As well as providing free remote CMS training sessions and webinars we can also visit you to deliver bespoke training for our software and hardware*.



Advanced Replacements†

Should your display suffer from any kind of hardware failure during the warranty period we will send you an advanced replacement and arrange for your old display to be collected, free of charge. This ensures no downtime where you are without a screen.



Custom Product Testing & Configuration

If you need us to test third party software or a website, or configure your screen in a particular way before it is dispatched (e.g. in a particular orientation or network mode), we can do so to make your life easier.



3D Rendering

Want to know how a particular screen will look once installed? Send us a photo of the location and we will create a 3D rendering of any screen in situ to help you to visualise how amazing it will look.



Logistics Support

We hold more stock in our UK warehouse than any other manufacturer so we can help you meet tight deadlines. For last minute orders we can also offer special express or morning delivery options*. We also carry out UK based quality control checks on every display before it leaves our warehouse.



Project Support

If you need to loan a sample unit to test we'd be more than happy to arrange this. We can also provide a rental service for temporary projects*.



Customisation*

Your display can be customised to suit your requirements by adding your logo or printed graphics or even tailoring the colour of a display. We can also carry out hardware modifications to existing products or manufacture bespoke solutions for special projects.



Extras*

As well as being able to provide accessories and add-ons, such as extra remote controls, NUC PCs and video wall controllers, we can also supply custom made flight cases which are great if a display needs to be moved safely from place to place.

†UK mainland only

*These particular services may incur additional charges