



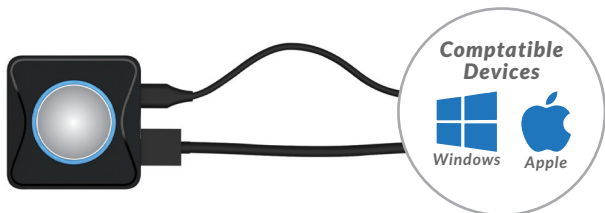
Simple Wireless Mirroring

PushShare enables smooth collaboration during meetings by allowing participants to wirelessly mirror their devices to the Interactive Touch Display* for more productive meetings. Once the dongle is connected to your device of choice, a simple push of the button will start wirelessly sharing the device's display to your Interactive Touch Display* instantly. This simple system suits user behaviour so anyone can use it without the need for any installation or training – maximising the return on your investment.



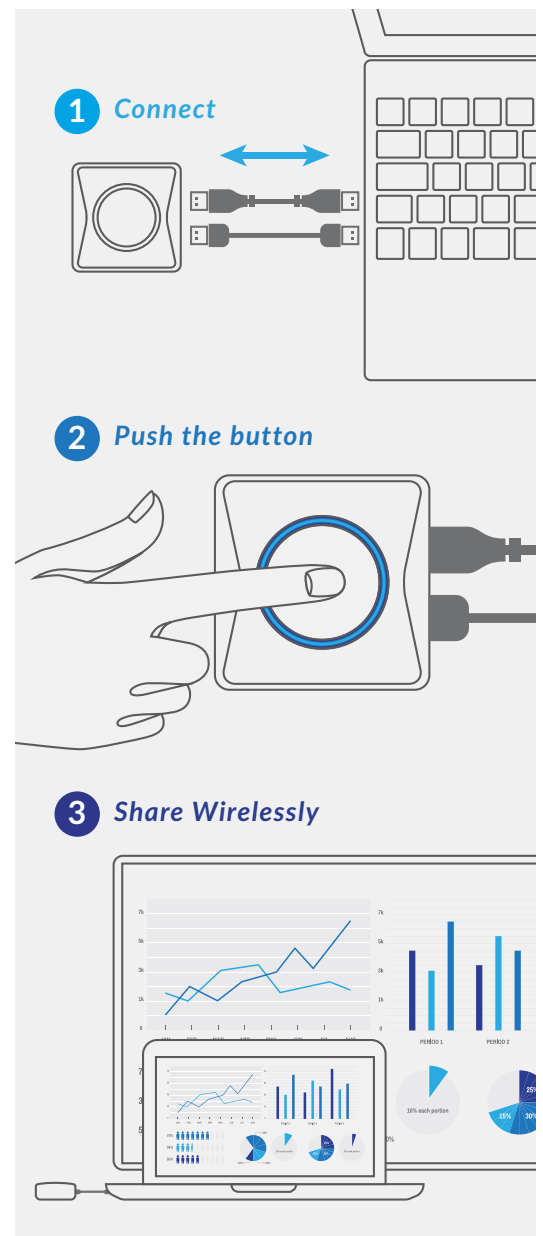
Universal Compatibility

Bring Your Own Device! PushShare enables users connect wirelessly to their Interactive Touch Display* in seconds using any device that can output a HDMI signal, such as Windows or Mac laptop or PC. This truly is a fully agnostic solution.



Touch Screen Interactivity Supported

Once you have connected the PushShare dongle to your device you can use the Interactive Touch Display* to control your device, providing two way interactivity. This is ideal when using PushShare to interact with a presentation on your laptop.



Other Features

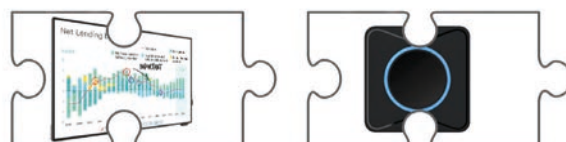
High Security Protection

The connection between the PushShare dongle and your Interactive Touch Display* is fully password protected. PushShare is able to be seamlessly integrated into any IT network as it uses the hotspot network created by the Interactive Touch Display*. Users can be sure that their mirroring is protected and secure between the devices.



Seamless Integration

The PushShare dongle and Interactive Touch Displays* have been designed in conjunction with one another for ultimate collaboration. The receiver hardware and software that the dongle communicates with is already integrated into your Interactive Touch Display*.



Multi-Screen Mirroring

With multiple PushShare dongles up to four separate devices can connect to the same Interactive Touch Displays* simultaneously. This is ideal for collaborative meetings that also require interactivity.



Cost Effective Solution

As a budget friendly meeting room solution, PushShare is essential for businesses. With only a dongle needed to improve collaboration and efficiency during meetings and presentations, the cost effectiveness cannot be compared.



		PushShare Dongle
Connections	Ports	1 x HDMI (audio video signal transfer), 1 x USB type C (power, touch, pairing and upgrades)
Support	Sending Devices Supported	Any device with HDMI output
	*Receiving Devices Supported	PushShare Receiving Unit (PSRV1) or Allsee PTxxF and PTxxG ranges
	Reverse Touch Control	10-point touch via Windows 7, 8.1 and 10, 1-point touch via macOS
Audio Visual	Resolution	1920x1080 (P60)
	Encoding Resolution	1920x1080 (P30)
	Simultaneous Connections	1-4 (Seperate Dongles)
	Resolution - 4 Displays	3840x2160
	Audio	44.1KHz/48KHz/16bit PCM (Stereo)
Wireless Transmission	Protocol	IEEE 802.11ac/802.11n
	Rate	867Mbps
	Distance	≈30m
	Frequency Band	2.4 GHZ and 5 GHz
	Authentication Protocol	WPA2-PSK
	Average Transmission Delay	<150ms
Power	Power Consumption	5V/500mA, average power consumption 1.5W
Mechanical	Unit Size (WxHxD mm)	62x62x20
	Net Weight (Kg)	0.15
	Package Size (WxHxD mm)	215x93x26
	Gross Weight (Kg)	0.25
Environmental	Operating Temperature	+5°C ~ +40°C
	Storage Temperature	-20°C ~ +60°C
	Operating Humidity	0 ~ 90%
	Storage Humidity	0 ~ 90%
Accessories	Included	HDMI cable x 1 (100mm), USB type C to type A cable x 1 (170mm), HDMI adapter (standard to mini HDMI), HDMI adapter (standard to micro HDMI)
Warranty	Warranty Period	3 Years
	Technical Support	Lifetime

*Compatible Models: PTxxF, PTxxG, PTxxH, PSRV1

Why Choose Our Commercial Display Solutions?



Lifetime Technical Support

From the moment you receive your product, throughout the duration of your warranty and even after your warranty has expired we are here to support you. If you require any assistance setting up or using your product, or have any problems at all, we can provide free technical support via telephone and email.



On-site Support and Maintenance*

If needed, we can provide an installation service for any of our products. We can also set up service-level agreements for larger projects that require maintenance contracts.



Extended Warranty*

All of our commercial display products come with a 3 year commercial warranty as standard but if you want to extend this you can upgrade this to cover a 5 year period at point of purchase.



Training

As well as providing free remote CMS training sessions and webinars we can also visit you to deliver bespoke training for our software and hardware*.



Advanced Replacements†

Should your display suffer from any kind of hardware failure during the warranty period we will send you an advanced replacement and arrange for your old display to be collected, free of charge. This ensures no downtime where you are without a screen.



Custom Product Testing & Configuration

If you need us to test third party software or a website, or configure your screen in a particular way before it is dispatched (e.g. in a particular orientation or network mode), we can do so to make your life easier.



3D Rendering

Want to know how a particular screen will look once installed? Send us a photo of the location and we will create a 3D rendering of any screen in situ to help you to visualise how amazing it will look.



Logistics Support

We hold more stock in our UK warehouse than any other manufacturer so we can help you meet tight deadlines. For last minute orders we can also offer special express or morning delivery options*. We also carry out UK based quality control checks on every display before it leaves our warehouse.



Project Support

If you need to loan a sample unit to test we'd be more than happy to arrange this. We can also provide a rental service for temporary projects*.



Customisation*

Your display can be customised to suit your requirements by adding your logo or printed graphics or even tailoring the colour of a display. We can also carry out hardware modifications to existing products or manufacture bespoke solutions for special projects.



Extras*

As well as being able to provide accessories and add-ons, such as extra remote controls, NUC PCs and video wall controllers, we can also supply custom made flight cases which are great if a display needs to be moved safely from place to place.

†UK mainland only

*These particular services may incur additional charges